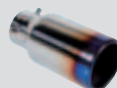




# Esterno

## Exterior

Protezione	<b>178</b>	Protection
Protezione paraurti	<b>186</b>	Bumper protectors
Specchi esterni	<b>189</b>	Exterior mirrors
Terminali scarico	<b>190</b>	Exhaust blowpipes
Estetica	<b>194</b>	Look
Targhe e contrassegni	<b>196</b>	Plates and signals



Salvaporta | Door protectors



## Mammut

Coppia salvaporta con catarifrangenti  
Pair of snap-on door protectors with reflectors

**20650** 205 mm

Blister Sfil.  12 / 144



## Wave

Coppia salvaporta con catarifrangenti  
Pair of snap-on door protectors with reflectors

**20658** 200 mm

Blister  12 / 144



## Hiro

Set 4 salvaporta adesivi. In plastica morbida con inserti cromati  
Set 4 adhesive door protectors. Soft plastic with chrome inserts

**20798** 125+80 mm

D/Blister  10 / 100



## Slim

Set 4 salvaporta adesivi. Flessibili, si adattano alle curvature  
Set 4 adhesive door protectors

**20799** 105+90 mm

D/Blister  10 / 100



## Dynamic

Set 4 salvaporta adesivi. Si possono facilmente curvare  
Set 4 pcs adhesive door protectors. May be easily curved to fit any door shape

**20811** 180 mm

D/Blister  12 / 120



## Knock-out

Set 4 salvaporta adesivi  
Set 4 adhesive door protectors

**20812** 98+50 mm

Blister  12 / 144

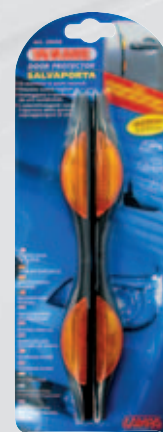


## Runner

Set 4 salvaporta adesivi  
Set of 4 adhesive door protectors

**20813** 115 mm

Blister  12 / 288



Salvaporta | Door protectors



## Moon-Guard

Set 4 salvaporta adesivi. In plastica morbida con inserti cromati  
Set of 4 adhesive door protector with chrome inserts

<b>20814</b>	Nero	Black	115+63 mm
<b>20815</b>	Argento	Silver	

D/Blister  10 / 100



## Diago-Type

Set 4 salvaporta con inserti cromati, adesivo 3M  
Set of 4 door protectors, 3M adhesive

<b>20818</b>	Nero	Black	110 mm
<b>20819</b>	Argento	Silver	

D/Blister  10 / 100



## X-Type

Set 4 salvaporta con inserti cromati, adesivo 3M  
Set of 4 door protectors, 3M adhesive

<b>20816</b>	Nero	Black	150+85 mm
<b>20817</b>	Argento	Silver	

D/Blister  10 / 100

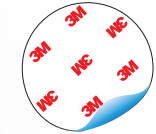


## C-Type

Set 4 salvaporta con inserti cromati, adesivo 3M  
Set of 4 door protectors, 3M adhesive

<b>20821</b>	Nero	Black	115+85 mm
<b>20822</b>	Argento	Silver	

D/Blister  10 / 100



## Racing

Set 4 salvaporta con inserti in alluminio.  
Adesivo speciale 3M

Set 4 door protectors with aluminium inserts,  
3M adhesive

<b>20823</b>	105+45 mm
--------------	-----------

D/Blister  10 / 100



## Crystal Junior

Set 4 salvaporta adesivi. In plastica morbida trasparente  
Set 4 adhesive door protectors. Clear soft plastic

<b>20621</b>	105 mm
--------------	--------

D/Blister  10 / 100



Strisce Salvaporta | Door protector stripes



Adesivo  
Adhesive

**X4 INVISIBLE**

Set 4 strisce adesive salva porta in morbida plastica. Adattabili alle curvature della carrozzeria e del paraurti

**X4 INVISIBLE**

Adhesive bumper, door protectors. Soft and flexible can be curved to fit any door and bumper

**20620** 276x15 mm

D/Blister 6 / 48



Incastro  
Snap-on

**ASTA-MAXI**

Coppia salvaporta. Montaggio ad incastro

**ASTA-MAXI**

Soft, snap-on door edge protectors

**20680** Trasp. Clear 260

**20860** Nero Black mm

D/Blister 12 / 144



**CONTOUR**

Coppia salvaporta morbidi. Montaggio ad incastro.

**CONTOUR**

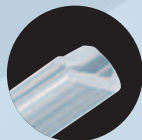
Soft, snap-on door edge protectors

**20858** Nero Black 650

**20859** Trasp. Clear mm

D/Blister 12 / 144

Incastro  
Snap-on



**CONTOUR-5**

Coppia salvaporta adesivi.

Possono essere tagliate e curvate. Montaggio con adesivo a contatto resistente alle alte e basse temperature

**CONTOUR-5**

Pair adhesive door edge protectors. May be cut and curved to fit door curvature. High quality adhesive for a perfect fitting. Warm and cold temperatures resistant

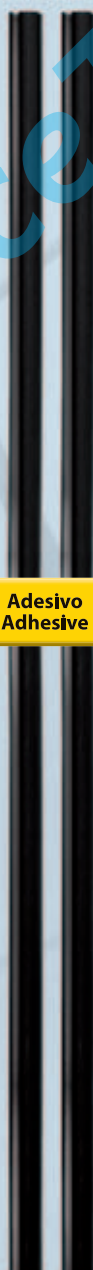
**20865** Nero Black 600

**20875** Cromo Chrome mm

D/Blister 10 / 100



Adesivo  
Adhesive



Strisce Salvaporta | Door protector stripes



Adesivo  
Adhesive

**STRISCIA SALVAPORTA ADESIVA**

Può essere tagliata e curvata per aderire meglio alla forma delle portiere. Montaggio con adesivo a contatto resistente alle alte e basse temperature

**ADHESIVE DOOR PROTECTOR STRIP**

May be cut and curved to fit doors curvatures. High quality adhesive tape for a perfect fit in warm and cold temperatures

<b>20876</b>	Cromo	Chrome	130 cm
<b>20877</b>	Nero	Black	

D/Blister 20 / 100



**PROTECTOR**

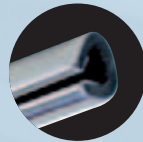
Coppia guarnizioni salvaporta. Incastro con adesivo a contatto.

**PROTECTOR**

Adhesive door edge protectors

<b>20862</b>	Cromo	Chrome	650 mm
<b>20863</b>	Trasp.	Clear	
<b>20864</b>	Nero	Black	

D/Blister 10 / 100



**CONTOUR-4**

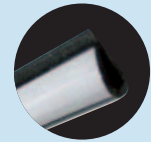
Set 4 pezzi salvaporta. Montaggio ad incastro. Possono essere tagliati e incurvati

**CONTOUR-4**

Soft, snap-on door edge protectors 4 pcs set. May be cut and curved to fit door shapes. Snap-fit

<b>20857</b>	Aluminium	870+670
<b>20869</b>	Carbon	mm

Busta / Bag 10 / 100



Incastro con adesivo  
Snap-on+adhesive



Lo speciale adesivo silicónico posizionato all'interno dei "PROTECTORS" garantisce un'adesione costante nel tempo, sia alle basse che alle alte temperature, non si secca e non rovina la carrozzeria.

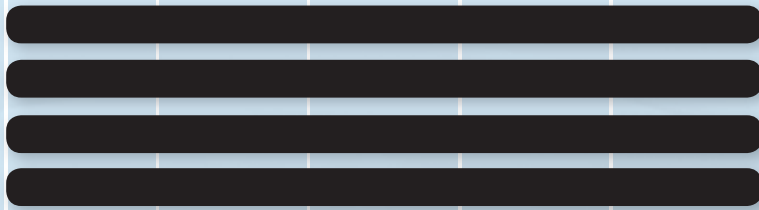
The special silicon-based adhesive inside the profile ensures a secure grip in cold and warm temperatures



Incastro  
Snap-on

Salvaparaurti | Bumper protectors

0 10 20 30 40 50 cm



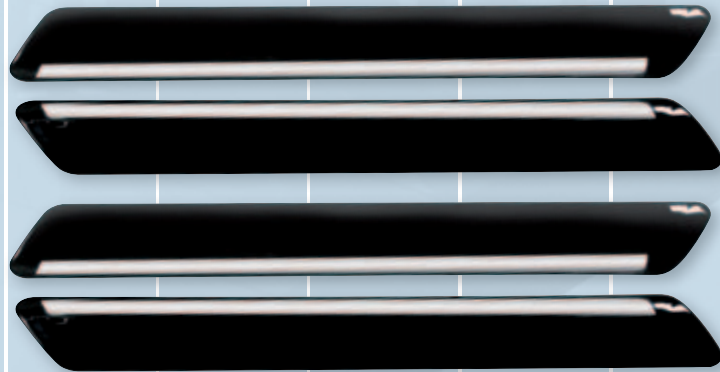
## Bumper Elegance

Set 4 salva-paraurti in morbido PVC. Speciale adesivo resistente alle alte e basse temperature. Universali, ideati per l'applicazione su superfici piane o curve

Set of 4 bumper protectors. Soft PVC. Universal fit, may be curved to fit any surface

**20600** 500x25 mm

D/Blister  5 / 20



## Chrome Trim

Set 4 salva-paraurti in morbido PVC con profilo cromato. Adesivo 3M resistente alle alte e basse temperature. Universali, ideati per l'applicazione su superfici piane o curve

Bumper protectors, 4 pcs. Soft PVC with 3M adhesive. Universal fit, may be curved to fit any surface

**20601** 485x53 mm

D/Blister  5 / 20



## Chrome Line XL

Set 2 salvaparaurti cromati, leggermente flessibili per adattarsi alla carrozzeria. Adesivo speciale. Utilizzabile anche come decorazione interna o esterna

Chromed strips, 2 pcs. Flexible, special adhesive. Suitable also for interior/exterior decorations

**20602** 570x25 mm

D/Blister  5 / 50



## Bumper Chrome

Coppia salva-paraurti adesivi. Con terminali cromati

2 pcs adhesive bumper protectors. Chromed ends

**20603** 495x40 mm

Blister  10 / 40



0 10 20 30 40 50 cm

Salvaparaurti | Bumper protectors



## Bumper-1



Coppia salva-paraurti adesivi  
2 pcs curved adhesive bumper protectors

**20604** 260x30 mm

Blister Sfil. 12 / 48

## Bumper-2



Coppia salva-paraurti adesivi in morbido PVC  
2 pcs slim adhesive bumper protectors

**20605** 340x19 mm

Blister 24 / 72

## Bumper-3



Coppia salva-paraurti adesivi in morbido PVC  
2 pcs large adhesive bumper protectors

**20606** 530x36 mm

Blister Sfil. 12 / 48

## Bumper-5



Coppia salva-paraurti adesivi  
2 pcs, adhesive bumper protectors

**20608** 380x50 mm

Blister 20 / 60

## Bumper-6



Coppia salva-paraurti adesivi  
2 pcs adhesive bumper protectors

**20609** 530x50 mm

Blister 12 / 36



## Long



Set 2 salva-paraurti in morbido PVC. Speciale adesivo 3M resistente alle alte e basse temperature. Universali, ideati per l'applicazione su superfici piane o curve

Adhesive bumper protectors, 2 pcs.  
Soft PVC. Universal fit, may be curved to fit any surface

**20610** 600x30 mm

D/Blister 10 / 50

## Corner Spoiler



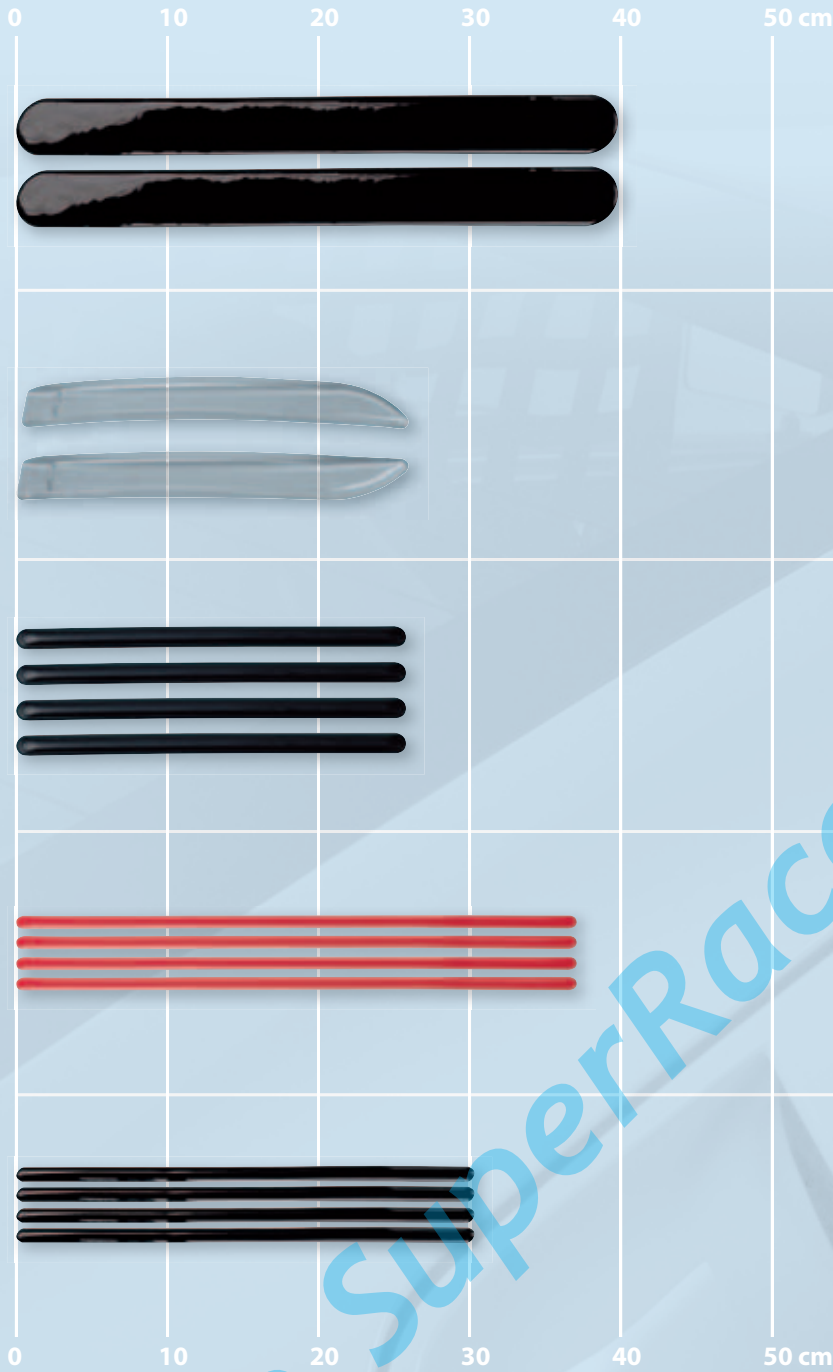
Coppia spoiler/salva-paraurti in morbido PVC. Adesivo speciale resistente alle alte e basse temperature. Universali, ideati per l'applicazione su superfici curve

Pair of adhesive bumper protector spoilers.  
Soft PVC with adhesive. Universal fit

**20599** 350x40 mm

D/Blister 6 / 24

Salvaparaurti | Bumper protectors



## Poxy

Coppia salva-paraurti adesivi  
2 pcs adhesive bumper protectors

<b>20615</b>	Nero	Black	398x40 mm
<b>20616</b>	Carbon	Carbon	
<b>20617</b>	Trasparente	Clear	

D/Blister 10 / 80

## Bumper-Clear

Coppia salvaparaurti adesivi trasparenti  
Pair of transparent adhesive bumper protectors

**20618** 260x30 mm

Blister 10 / 100

## Bumpy's

Set 4 salvaporta/paraurti adesivi, multiuso  
Set of 4 adhesive, soft and flexible door/  
bumper protectors

**20619** 255x15 mm

D/Blister 12 / 144

## Cata-Reflex

4 strisce catarifrangenti adesive.  
Catarifrangente speciale 3M Scotchlite  
4 adhesive reflective protector stripes

**20628** 370x10 mm

D/Blister 10 / 100

## Sticky-Stripes

4 strisce adesive multiuso  
4 multiuse adhesive protectors

<b>20635</b>	Nero	Black	298x10 mm
<b>20636</b>	Carbon	Carbon	
<b>20637</b>	Trasparente	Clear	

D/Blister 10 / 100





# Full Bumper Protector



## FULL BUMPER PROTECTOR

Profilo paraurti adesivo in PVC. Rimane morbido anche a basse temperature. Idoneo per l'applicazione su tutti i paraurti verniciati o in metallo. Può essere facilmente curvato e tagliato a misura. Adesivo 3M per una presa sicura e duratura.

## FULL BUMPER PROTECTOR

Soft PVC moulding. Remains soft even at cold temperatures. Suitable for all painted or metal bumpers. Can be cut into 2 or 4 sections. Special 3M adhesive tape for a secure and long-lasting grip



x8

Kit da 5 m per una vettura  
Comprende 8 terminali  
5 m DIY kit for one vehicle  
Inclusive of 8 terminals

<b>20611</b>	32 mm	5 m	D/Blister <input type="checkbox"/> 10
<b>20613</b>	49 mm		D/Blister <input type="checkbox"/> 8



x32

Dispenser uso professionale  
rotolo da 20 m con 32 terminali  
20 m professional roll inclusive  
of 32 terminals

<b>20612</b>	32 mm	20 m	
<b>20614</b>	49 mm		

Dispenser  2

# Body-Guard Kit

**BODY-GUARD KIT, PELLICOLE PROTETTIVE TRASPARENTI**  
Protezione invisibile contro i danni da pietrisco, graffi, insetti...  
Adesivo removibile senza residui

**BODY-GUARD KIT**  
Invisible paint protective film.  
Water-base adhesive

**75031**

Scatola / Box  6

Kit composto da:  
2 x 140x20 cm  
1 x 140x30 cm  
1 spatola  
1 taglierino



### PROTEZIONI PER PARAURTI SU MISURA

La maggior parte delle auto moderne ha il paraurti posteriore verniciato, molto vulnerabile perché esposto ai graffi da carico e scarico del baule. Con la protezione paraurti si risolve il problema in modo definitivo.

- Una volta installato sembra un prodotto originale.
- Valorizza lo stile originale dell'auto
- In plastica ABS nera.
- Rifilatura C.N.C. per un perfetto adattamento alla sagoma originale.
- Fissaggio semplice e sicuro con biadesivo 3M.
- Si applica in soli 10 minuti.

### CUSTOM-FIT REAR BUMPER PAINT PROTECTORS

Most modern vehicles have painted rear bumpers which are vulnerable to paint damage and are expensive to repaint and repair. The rear bumper paint protectors solve this problem.

- Manufactured in black ABS plastic.
- C.N.C. trimmed to ensure a perfect fit.
- Secured in position with 3M self-adhesive tape.
- Quick and easy to fit in about 10 minutes.
- Full diagrammatic fitting instructions are supplied.
- Retains and enhances the original style and concept of the car.
- Looks like original products when fitted.

Scatola / Box 1

Elenco completo ed aggiornato sul catalogo on-line:  
Complete and updated list of available models on:  
[www.lampa.it](http://www.lampa.it)

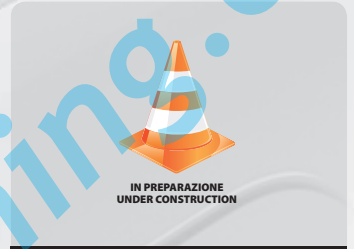
# Bumper Protectors



SU MISURA  
CUSTOM-FIT



**49700**  
ALFA ROMEO  
159 - 9/05>



**49900**  
BMW  
Serie 5 Touring (E61) - 3/07>



**49701**  
BMW  
Serie 3 (E90) - No serie "M" - 9/08>



**49702**  
BMW  
Serie 3 Touring (E91) - No serie "M" - >8/08



**49703**  
BMW  
E91 sw - No serie "M" - 9/08>



**49901**  
BMW  
X5 - 1/07>



**49902**  
BMW  
X6 - 6/08>



**49502**  
CITROEN  
C3 - 5/02>



**49503**  
CITROEN  
C4 5P - 1/05>



**49704**  
CITROEN  
C4 Grand Picasso - 10/06>



**49705**  
CITROEN  
C4 Picasso - 3/07>



**49504**  
FIAT  
500 - 7/07>



**49505**  
FIAT  
Grande Punto - 9/05>



**49506**  
FIAT  
Panda - No 4x4 Cross - 9/03>



**49706**

**FIAT**  
Qubo - 9/08>



**49507**

**FORD**  
Fiesta - 10/08>



**49707**

**FORD**  
Focus - St/Tdci/Zetec/Zetec - 9/07>



IN PREPARAZIONE  
UNDER CONSTRUCTION

**49708**

**FORD**  
Focus - Studio/Style/Titanium - 9/07>



**49508**

**KIA**  
Cee'd 5p - 2/07>



**49509**

**MERCEDES**  
Classe B - 3/08>



**49709**

**MERCEDES**  
Classe C sw (W204) - 1/08>



**49710**

**MERCEDES**  
Classe E sw (W211) - 3/03>5/09



**49711**

**MERCEDES**  
Viano / Vito -



**49501**

**MINI**  
Cooper - 9/06>



**49500**

**MINI**  
One / Cooper - >9/06



**49510**

**OPEL**  
Astra H 3p - No Vxr - 4/05>



**49511**

**OPEL**  
Astra H 5p - 3/04>



**49512**

**OPEL**  
Astra H sw - 3/04>



**49513**

**OPEL**  
Corsa D 3/5p - 9/06>



**49514**

**OPEL**  
Zafira - 3/05>



**49516**

**PEUGEOT**  
206 / 206 CC - 4/98>12/08



**49517**

**PEUGEOT**  
207 3/5p - 5/06>



**49515**

**PEUGEOT**  
307 3/5p - 01>08



**49518**

**PEUGEOT**  
308 3/5p - 9/07>



**49712**

**PEUGEOT**  
308 sw - 5/08>



**49713**

**PEUGEOT**  
407 sw - 9/04>



**49714**

**RENAULT**  
Clio - 05>



**49715**

**RENAULT**  
Twingo - 07>



IN PREPARAZIONE  
UNDER CONSTRUCTION

**49520**

**SEAT**  
Ibiza 3p - 8/08>



IN PREPARAZIONE  
UNDER CONSTRUCTION

**49521**

**SEAT**  
Ibiza 5p - 8/08>



**49519**

**SEAT**  
Ibiza No FR - 2/02>7/08



**49522**

**SEAT**  
Leon 5P - 9/05>5/09



**49716**

**SUZUKI**  
Grand Vitara 3p - 10/05>



**49717**

**SUZUKI**  
Grand Vitara 5p - 10/05>



**49523**

**SUZUKI**  
Swift - 08>



**49524**

**SUZUKI**  
SX4 - 3/06>



**49525**

**TOYOTA**  
Yaris - 1/06>



**49526**

**VOLKSWAGEN**  
Golf IV - 10/97>9/03



**49527**

**VOLKSWAGEN**  
Golf V - 10/03>10/08



**49528**

**VOLKSWAGEN**  
Golf VI - 10/08>



**49718**

**VOLKSWAGEN**  
New Beetle - 7/05>



**49529**

**VOLKSWAGEN**  
Passat sw - 10/05>



**49530**

**VOLKSWAGEN**  
Polo - 2/02>8/09



Elenco completo ed aggiornato  
sul catalogo on-line:

Complete and updated list of  
available models on:

[www.lampa.it](http://www.lampa.it)





**MIRAGE**  
Specchio retrovisore laterale.  
Universale per montaggio a  
destra o sinistra

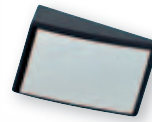
**MIRAGE**  
Side mirror.  
Universal left-right mount

Universale  
Universal



**65545** 100x160 mm

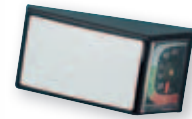
Blister 20 / 40



**SPECCHIETTO  
CONVESSO ADESIVO**  
Per retrovisori laterali  
**ADHESIVE CONVEX  
MIRROR**  
For side mirrors.

**65560** 55x35 mm

Blister 12 / 144



**SPECCHIETTO CONVESSO  
ADESIVO CON  
TERMOMETRO**  
Con termometro allarme  
ghiaccio incorporato.  
Angolazione regolabile.

**ADHESIVE BLIND SPOT  
CONVEX MIRROR AND  
THERMOMETER**  
With ice alert thermometer

**65570** 70x35 mm

D/Blister 12 / 144



Universale  
Universal

**SPORT**  
Specchio retrovisore laterale.  
Universale per montaggio a  
destra o sinistra

**SPORT**  
Side mirror. Universal left-right  
mount

**65546** 130x80 mm

D/Blister 20 / 40



Regolabile  
Adjustable

**SWING**  
Specchietto adesivo  
convesso rotondo.  
Per retrovisori laterali,  
regolabile a 360°

**SWING**  
Adjustable round convex  
mirror. For side mirrors.

**65561** Ø 50 mm

D/Blister 12 / 144



**SPECCHIETTO ADESIVO  
CONVESSO ROTONDO**  
Elimina gli angoli  
nascosti.

**ADHESIVE CONVEX  
ROUND BLIND SPOT  
MIRROR**  
Eliminates blind spot.

**65562** Ø 50 mm

D/Blister 12 / 144



**CARAVAN**  
Specchio supplementare.  
Montaggio universale

**CARAVAN**  
Towing mirror. Simply clamp-on to  
existing side mirror

**65551** 150x110 mm

D/Blister 10 / 10



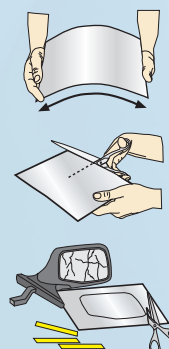
**MAGIC-MIRROR**  
Specchio magico multiuso. Alta  
riflettenza infrangibile, flessibile,  
sagomabile. Prodotto interamente  
in plastica antiurto. Fornito con  
biadesivo

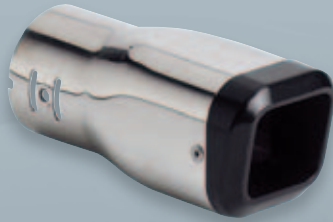
**MAGIC-MIRROR**  
Plastic lens. Easy cut, no special  
tools used.

**65557** M 202x126 mm

**65558** L 253x178 mm

Blister 5 / 120





**TS-5 POWER**  
Terminale di scarico in acciaio inox lucidato

**TS-5 POWER**  
Stainless steel exhaust blowpipe

**60005** Ø 27-57 mm


Blister  10 / 30



**TS-6 LE MANS**  
Terminale di scarico in acciaio inox lucidato

**TS-6 LE MANS**  
Stainless steel exhaust blowpipe

**60015** Ø 27-50 mm


Blister Sfil.  10 / 30

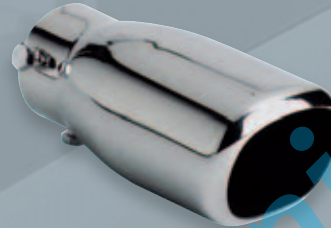


**TS-7 MONZA**  
Terminale di scarico in acciaio inox lucidato

**TS-7 MONZA**  
Stainless steel exhaust blowpipe

**60016** Ø 30-57 mm


Blister Sfil.  10 / 30

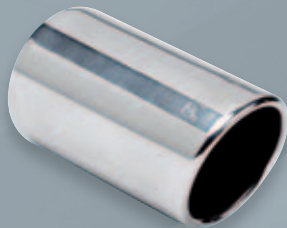


**TS-10 RALLY**  
Terminale di scarico in acciaio inox lucidato

**TS-10 RALLY**  
Stainless steel exhaust blowpipe

**60017** Ø 30-60 mm

Blister Sfil.  10 / 30




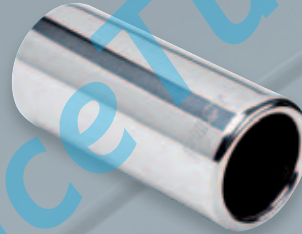
**TS-16 PILOT-1**  
Terminale di scarico in lega di acciaio, rivestimento inox lucidato

**TS-16 PILOT-1**  
Steel alloy exhaust blowpipe with stainless steel finish

**60024** Ø 35-50 mm

**60025** Ø 45-60 mm

Scatola / Box  2 / 10



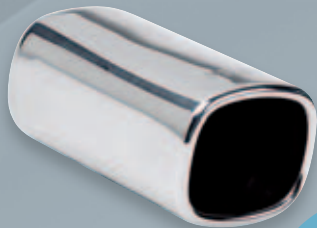
**TS-19 PILOT-4**  
Terminale di scarico in lega di acciaio, rivestimento inox lucidato

**TS-19 PILOT-4**  
Steel alloy exhaust blowpipe with stainless steel finish

**60030** Ø 35-50 mm

**60031** Ø 45-60 mm

Scatola / Box  2 / 10



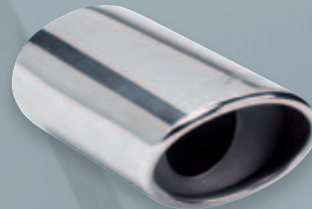
**TS-18 PILOT-3**  
Terminale di scarico in lega di acciaio, rivestimento inox lucidato

**TS-18 PILOT-3**  
Steel alloy exhaust blowpipe with stainless steel finish

**60028** Ø 35-50 mm

**60029** Ø 45-60 mm

Scatola / Box  2 / 10



**TS-17 PILOT-2**  
Terminale di scarico in lega di acciaio, rivestimento inox lucidato

**TS-17 PILOT-2**  
Steel alloy exhaust blowpipe with stainless steel finish

**60026** Ø 35-50 mm

**60027** Ø 45-60 mm


Scatola / Box  2 / 10

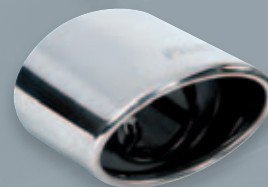


**TS-14 TT**  
Terminale di scarico in acciaio inox e alluminio

**TS-14 TT**  
Stainless steel and aluminium exhaust blowpipe

**60018** Ø 30-55 mm

Scatola / Box  3 / 12



**TS-500 OVALE**  
Terminale di scarico in acciaio inox lucidato

**TS-500 OVAL**  
Stainless steel polished exhaust blowpipe

**60055** Ø 40-54 mm

Scatola / Box  3 / 12



**TS-15 ULTRA-LIGHT**  
Terminale di scarico in alluminio

**TS-15 ULTRA-LIGHT**  
Aluminium exhaust blowpipe

**60019** Ø 30-50 mm

Scatola / Box  3 / 12

Adatto per / Fits:  
Fiat Panda 03>  
Fiat 500 1.2 07>



**TS-3 TURBO**

Terminale di scarico in lega di acciaio e rivestimento in alluminio. Suono sportivo

**TS-3 TURBO**

Stainless steel and aluminium exhaust blowpipe. Sport sound

**60023** Ø 37-70 mm

Blister 10 / 30



**TS-2 TWIN-SPORT**

Terminale di scarico in lega di acciaio e rivestimento in alluminio. Suono sportivo

**TS-2 TWIN-SPORT**

Stainless steel and aluminium exhaust blowpipe. Sport sound

**60022** Ø 32-51 mm

Blister 10 / 20



**T-5 BORDO**

Terminale di scarico in acciaio inox cromato

**T-5 ROLLED RIM**

Stainless steel exhaust blowpipe

**60100** Ø 30-47 mm

D/Blister 12 / 36

**TS-1 SPORT**

Terminale di scarico in lega di acciaio e rivestimento in alluminio. Suono sportivo

**TS-1 SPORT**

Stainless steel and aluminium exhaust blowpipe. Sport sound

**60021** Ø 35-54 mm

D/Blister 10 / 30



**T-4 DIAGONALE**

Terminale di scarico in acciaio cromato, taglio diagonale

**T-4 DIAGONAL**

Stainless steel, diagonal cut exhaust blowpipe

**60000** Ø 30-50 mm

Blister 12 / 36

**T-1 OVALE**

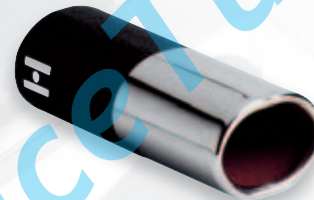
Terminale di scarico in acciaio inox cromato

**T-1 OVAL**

Stainless steel exhaust blowpipe

**60050** Ø 30-47 mm

D/Blister 12 / 36



**T-3 DIAGONALE**

Terminale di scarico in acciaio cromato, taglio diagonale

**T-3 DIAGONAL**

Stainless steel, diagonal cut exhaust blowpipe

**60052** Ø 30-47 mm

D/Blister 12 / 36

**T-2 OVALE**

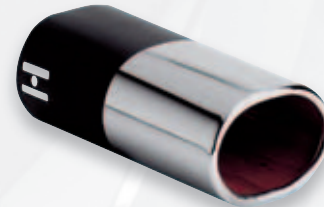
Terminale di scarico in acciaio inox cromato

**T-2 OVAL**

Stainless steel exhaust blowpipe

**60054** Ø 35-57 mm

D/Blister 12 / 36



**TS-20 DAYTONA**

Terminale di scarico in acciaio inox cromato. Doppia uscita Ø 70 mm. Doppia camera con profilo ribordato

**TS-20 DAYTONA**

Stainless steel exhaust blowpipe with chrome finish. 70 mm twin pipe

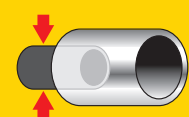
**60020** Ø 40-57 mm

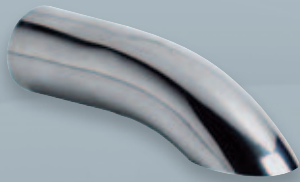
Scatola / Box 5 / 20



Le misure indicate, si riferiscono alla idoneità del terminale al diametro esterno (Ø Min-Max) del tubo di scarico del veicolo

The mentioned sizes refer to the adaptability of the tail-pipe to the external diameter (Min-Max Ø) of the original blowpipe



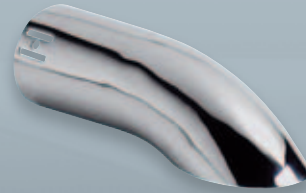


**T-6 CURVO**  
Terminale di scarico curvo in acciaio inox cromato

**T-6 BENT-END**  
Stainless steel exhaust blowpipe

**60120** Ø 30-45 mm

D/Blister 12 / 36



**T-7 CURVO**  
Terminale di scarico in acciaio inox cromato

**T-7 BENT-END**  
Stainless steel exhaust blowpipe

**60130** Ø 35-57 mm

D/Blister 12 / 36



**GOMITO 120°**  
Terminale di scarico in acciaio cromato

**BEND 120°**  
Stainless steel, 120° curved type exhaust blowpipe

**60002** Ø 30-50 mm

D/Blister 3 / 12



**GOMITO 140°**  
Terminale di scarico in acciaio inox cromato

**BEND 140°**  
Stainless steel, curved type exhaust blowpipe

**60014** Ø 40-60 mm

D/Blister 10 / 50



**GOMITO**  
Terminale di scarico in acciaio inox cromato

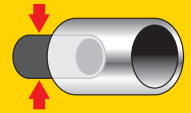
**BEND**  
Stainless steel, curved type exhaust blowpipe

**60013** Ø 40-60 mm

D/Blister 5 / 20

Le misure indicate, si riferiscono alla idoneità del terminale al diametro esterno (Ø Min-Max) del tubo di scarico del veicolo

The mentioned sizes refer to the adaptability of the tail-pipe to the external diameter (Min-Max Ø) of the original blowpipe



**SWING-TIP**

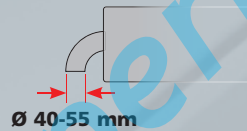
Con sistema di regolazione dell'angolo di curvatura. Universale per marmitte con diametro da 40 a 55 mm. Specifico per vetture con sistema di scarico ricurvo verso il basso oppure parzialmente nascosto dal paraurti

**SWING-TIP**

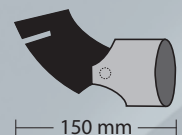
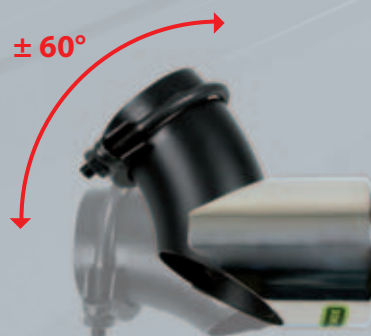
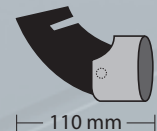
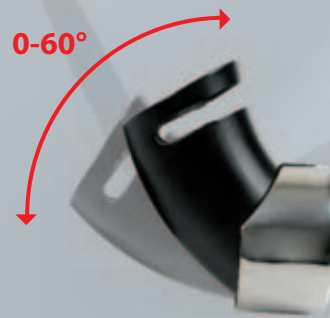
Specific for cars with curved exhaust pipe system. Fits over existing tail pipes from 40 up to 55 mm diameter

**60044** 110 mm Ø 40-55 mm  
**60045** 150 mm

Scatola / Box 10



# Swing-Tip



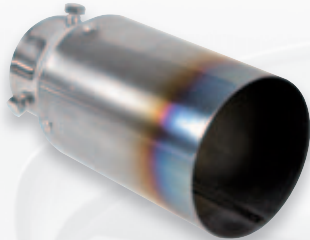


# Fire-Tail

**TITANIO  
TITANIUM**

**FIRE-TAIL TITANIUM**  
Terminale di scarico in titanio con attacco in acciaio inox per montaggio a vite oppure saldato allo scarico originale. Ultra leggero e super resistente.

**FIRE-TAIL TITANIUM**  
Titanium exhaust blowpipe. Stainless steel conjunction for weld-on or screw-on fitting. Ultra-light and extra-strong. Blue-flame finish



**TAGLIO DIRITTO  
STRAIGHT CUT**

**60032** Ø 89 mm  
**60033** Ø 102 mm

Scatola / Box 4 / 12



**CON BORDO  
ROLLED OVER**

**60034** Ø 89 mm  
**60035** Ø 102 mm

Scatola / Box 4 / 12

# Fire-X

**ACCIAIO INOX  
STAINLESS STEEL**

**FIRE-X ACCIAIO INOX**  
Terminale di scarico in acciaio inox. Con attacco per montaggio a vite oppure saldato allo scarico originale.

**FIRE-X STAINLESS STEEL**  
Stainless steel exhaust blowpipe. With conjunction for weld-on or screw-on fitting. Blue-flame finish.



**TAGLIO DIRITTO  
STRAIGHT CUT**

**60036** Ø 89 mm  
**60037** Ø 102 mm

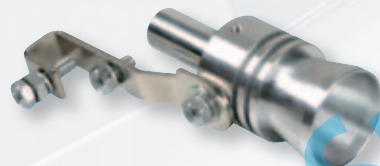
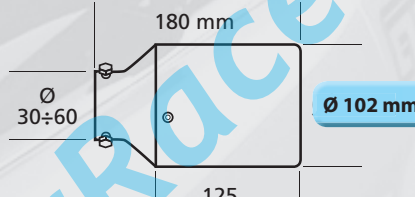
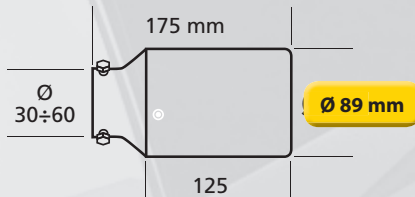
Scatola / Box 4 / 12



**CON BORDO  
ROLLED OVER**

**60038** Ø 89 mm  
**60039** Ø 102 mm

Scatola / Box 4 / 12



## TURBO-SOUND

Si applica all'interno del terminale di scarico ed emette un sibilo tipico delle vetture turbo. Di facile installazione. In lega di alluminio, leggero e resistente

## TURBO-SOUND

Whistle effect for exhaust pipes. Easy-fitting on the vehicle's muffler, it reproduces the sound of a turbo engine car. Aluminium body, very strong and light



**ALUMINIUM  
ALLOY**

	Taglia Size	Misura terminale Tail pipe size	Lunghezza Length	Cilindrata Engine
<b>60071</b>	S	Ø 32/43 mm	110 mm	1000-1600 cc
<b>60072</b>	M	Ø 37/48 mm	110 mm	1600-2000 cc
<b>60073</b>	L	Ø 44/55 mm	110 mm	2000-2400 cc
<b>60074</b>	XL	Ø 58/85 mm	120 mm	2400 cc >

D/Blister 5 / 50



## FIRE-DRAGON, KIT LANCIAFIAMME

Idoneo SOLO per vetture a BENZINA con cilindrata oltre 1500 cc. Per il solo uso scenografico, stunt-cars, vetture da show o manifestazioni motoristiche. Il montaggio di questa apparecchiatura deve essere eseguito solo da personale esperto. Prodotto NON omologato per l'installazione e utilizzo su vetture stradali.

**FIRE-DRAGON, THE MOTOR-SHOW FLAME BLASTER**  
ONLY suitable for PETROL ENGINES above 1500 cc The fitting of this device must be effected by specialized workshops only. The installation must be limited to cars being used for movies, stunt-cars shows, motorsport exhibitions.

**10309**

Scatola / Box 4 / 12



Idoneo **SOLO** per vetture a **BENZINA** con cilindrata oltre 1500 cc.

**ONLY** suitable for **PETROL** engine above 1500 cc



**GC-3, COPPIA GANCI COFANO IN GOMMA**  
Lunghezza mm 120, completi di attacchi.  
**GC-3, RUBBER BONNET HOOKS**  
Length mm 120, supplied with fittings.

**65000**

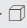
D/Blister  10 / 50



**GC-0, KIT GANCI COFANO COMPETIZIONE**  
In lega di alluminio, trattengono il cofano chiuso durante le "toccate" nelle corse

**GC-0, HOOD PIN KIT**  
Aluminium, universal for all cars.


**04550**

D/Blister  10 / 50



**COPPIA GANCI COFANO**  
Multiuso, in acciaio cromato  
**OVER-CENTRE CLIPS**  
Multi-use, chrome plated

**65001**

D/Blister  10 / 100




**LUCE A LED**  
**LED LIGHT**



**OBLÒ PER COFANO MOTORE**  
Con illuminazione a Led bianco 12V.  
Prodotto in lega di alluminio con vetro in policarbonato

**BONNET SEE-THROUGH WINDOW**  
With 12V white Led lighting. Made from aluminium and polycarbonate lens.

**01969**

Scatola / Box  10 / 20



**COPPIA PARASPRUZZI UNIVERSALI**

Anteriori e posteriori in PVC, con catarifrangenti.  
Montaggio senza fori, cm 22,5x33

**PAIR OF UNIVERSAL MUDFLAPS**

Front/rear application, size cm 22,5x33,  
with reflectors

**12500**

Film / Shrink 12



**RALLY, COPPIA PARASPRUZZI ANTERIORI/POSTERIORI**

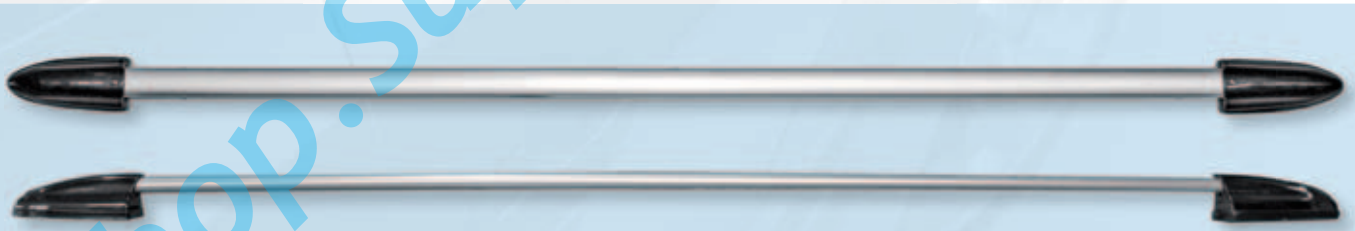
cm 23,5x42,5.  
In plastica antiurto con griglia in lega di alluminio. Kit viti di montaggio in dotazione.

**RALLY, UNIVERSAL MUDFLAPS FRONT/REAR**

cm 23,5x42,5.  
Ultra-light impact-resistant plastic with aluminium grill. Fittings included

<b>12991</b>	Nero	Black
<b>12992</b>	Rosso	Red
<b>12994</b>	Blu	Blue

D/Blister 5 / 20



**IMPORTANTE:**  
queste barre decorative NON POSSONO ASSOLUTAMENTE essere utilizzate per trasportare box, portapacchi, porta-sci o qualsiasi altro oggetto

**WARNING:** This is not a real roof rail and must not be used absolutely for transportation of boxes, racks, sky carriers or other roof accessories

**COPPIA BARRE DECORATIVE PER TETTO, ADESIVE**  
Lunghezza 160 cm, accorciabili per utilizzi diversi (es. impugnatura portellone posteriore)  
Adesivo speciale 3M® ad alta presa

**ADHESIVE ROOF RAIL DECORATIONS**  
160 cm, can be cut at any lenght (e.g. rear door grips). Special 3M® adhesive

<b>20071</b>	Alluminio	Aluminium
<b>20072</b>	Nero	Black

Cartone / Carton 1 / 4





### CONTRASSEGNO ESERCITAZIONI GUIDA, MAGNETICO

Per l'applicazione sulla carrozzeria senza l'utilizzo di adesivi o supporti.

#### MAGNETIC SIGNAL

<b>65355</b>	Anteriore	Busta / Bag	10 / 100
<b>65356</b>	Posteriore	Busta / Bag	10 / 50

**MAGNETICO  
MAGNETIC**

### CONTRASSEGNO ESERCITAZIONI GUIDA, STATICO

In pvc statico per l'applicazione al vetro senza l'utilizzo di adesivi o supporti.

#### STATIC SIGNAL

<b>65348</b>	Anteriore	Busta / Bag	10 / 200
<b>65349</b>	Posteriore	Busta / Bag	20 / 200

**STATICO  
STATIC**



**IN METALLO  
METAL**

#### PORTA TARGA DAL 1999 ITALIAN LICENCE HOLDER

<b>19902</b>	Posteriore / Rear	Sfuso / Bulk	5 / 50
<b>19922</b>	Anteriore / Front	Sfuso / Bulk	5 / 100



**TAPPO COPRIGANCIO**  
In morbido PVC con anello e cinghia di ritenzione  
**PVC TOW-BALL COVER**  
With retain ring and belt

**38970**  
D/Blister 10 / 100



**EARTH-STRIP, CINGHIA ANTISTATICA IN METALLO**  
Scarica a terra l'elettricità statica accumulata dall'auto. Niente più scosse scendendo dall'auto. Si applica al terminale di scarico tramite fascetta.

**EARTH-STRIP, ANTI-STATIC STRIP**  
Avoid shocks by preventing static electricity build-up, the electricity is discharged to the ground. Fitting around the exhaust pipe using the enclosed strap.

**21833**

D/Blister 10 / 100



**CASSETTA MAGNETICA PER  
CHIAVI DI SCORTA**  
**MAGNETIC SPARE KEYS HOLDER**

**65100**

D/Blister 10 / 100