



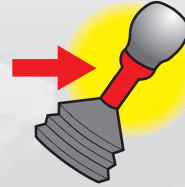
COLLARE PER POMELLI E LEVA CAMBIO

In lega di alluminio spazzolato. Ottima estensione del pomello e rivestimento della leva del cambio

COLLAR FOR GEAR SHIFT LEVER AND KNOB

Brushed aluminium.

Great looking knob extension and lever cover.
Best with leather boot



Non idoneo per l'utilizzo su vetture con leva cambio speciale (ghiera innesto retromarcia a siringa).

Not suitable for cars with lift-reverse shift system



Ø 28 mm
h 37 mm



COLLARE POMELLO STRETTO E CORTO

Per pomelli con attacco standard contrassegnati con (N)

NARROW COLLAR, SHORT

For gear shift knobs with standard fitting (N)

00601 Ø 28 mm - h 37 mm

D/Blister 10 / 100



Ø 28 mm
h 70 mm

COLLARE POMELLO STRETTO E LUNGO

Per pomelli con attacco standard contrassegnati con (N)

NARROW COLLAR, LONG

For gear shift knobs with standard fitting (N)

00602 Ø 28 mm - h 70 mm

D/Blister 10 / 100

Ø 32 mm
h 37 mm



COLLARE POMELLO LARGO E CORTO

Per pomelli con attacco universale contrassegnati con (N+S)

LARGE COLLAR, SHORT

For gear shift knobs with universal fitting (N+S)

00611 Ø 32 mm - h 37 mm

D/Blister 10 / 100



Ø 32 mm
h 70 mm

COLLARE POMELLO LARGO E LUNGO

Per pomelli con attacco universale contrassegnati con (N+S)

LARGE COLLAR, LONG

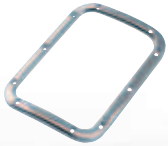
For gear shift knobs with universal fitting (N+S)

00612 Ø 32 mm - h 70 mm

D/Blister 10 / 100

estop SuperRace Tuning.eu

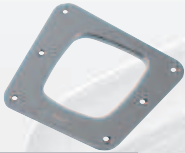
Cornici leva cambio | Gear shift frames



01001 A

D/Blister 10 / 80

CORNICI CAMBIO SPORTIVE
In lega di alluminio cromato
CHROMED ALUMINIUM SPORT GEAR
SHIFT FRAMES



01003 C

D/Blister 10 / 80



01005 E

D/Blister 10 / 40



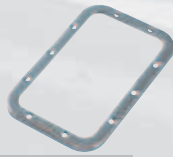
01007 G

D/Blister 10 / 80



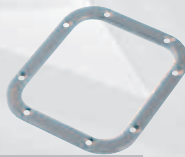
01008 H

D/Blister 10 / 80



01009 I

D/Blister 10 / 80



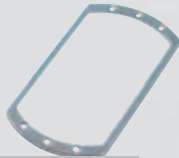
01011 M

D/Blister 10 / 80



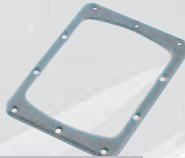
01012 N

D/Blister 10 / 80



01014 P

D/Blister 10 / 80



01016 R

D/Blister 10 / 80



01018 T

D/Blister 10 / 80



01019 U

D/Blister 10 / 80



01020 V

D/Blister 10 / 80



01021 Z

D/Blister 10 / 80



01022 Y

D/Blister 10 / 80



01024 W

D/Blister 10 / 80



ALFA ROMEO	
33	N
145	C
146	C
155	P
164 (escl. Super)	R
BMW	
Compact	G
CITROËN	
Berlingo	U
Saxo (escl. VTS)	U
CHRYSLER	
Voyager 99>	I
DAIHATSU	
Sirion	N
Terios	P
FIAT	
Brava	P
Bravo	P
Cinquecento 95>	I
Coupè	Y
Marea (escl. JTD 130cv)	P
Punto 1 93>99	M
Punto 2 HGT/HLX/Sporting 99>03	Y
Punto 2 S/SX/ELX/D/ELX/JTD 99>03	Z
Tipo	M
Uno I serie	M
Uno II serie	R
FORD	
Fiesta >96	R
Focus >04	W
Puma	E
HONDA	
Accord / Coupè	N
Civic 97>00	N
HRV	C
Integra	P
Logo	N
Prelude	A
HYUNDAI	
Accent >99	I
Atos	I
S,Coupè	I
LANCIA	
Delta (escl. HPE) 95>	P
MERCEDES	
SLK	I
W202	I
W210 E Class	I

MITSUBISHI	
Pajero Pinin	N
NISSAN	
200SX	N
Almera	I
Micra	N
OPEL	
Astra >99	N
Calibra	N
Corsa (escl. Corsa C) 93>01	N
Tigra	N
Zafira	N
PEUGEOT	
206 (escl. GT/GTI)	R
RENAULT	
Clio 90>98	R
Clio 98>	N
Kangoo	H
Mégane 96>03	H
Mégane Scénic >00	H
Twingo	I
ROVER	
200 97>	R
SAAB	
900 94>	N
SEAT	
Arosa	V
Cordoba, Vario 95>99	V
Ibiza 95>03	V
Toledo >99	V
SKODA	
Octavia >99	V
SUBARU	
Justy	I
SUZUKI	
Swift	I
Jimny	N
TOYOTA	
Avensis	N
Corolla >02	N
Yaris	U
VOLKSWAGEN	
Golf II	T
Lupo	A
New Beetle	A
Polo >10/94	I
Polo 10/94>99	V

SLIM



STANDARD



BARRETTE LEVA CAMBIO CROMATE
In lega leggera con finitura al cromo. Montaggio facile e rapido. Ideali anche per cruscotti, montanti, portiere, pannelli di comando, impianti hi-fi. Viti autofilettanti in dotazione

CHROMED GEAR SHIFT BARS
Easy and quick fitting. Give the gear console a prominent chrome appearance. Suitable also for dashboard, door panels, instrument panels. Fitting screws included

01040 Standard 145x27 mm

01041 Slim 145x27 mm

D/Blister 10 / 100

CUFFIA LEVA CAMBIO

In vera pelle. Misura universale

GEAR SHIFT LEVER BOOT

Made of genuine leather. Universal

05001	Nero	Black
05002	Grigio	Grey
05003	Rosso	Red
05005	Blu	Blue

D/Blister 5 / 30



CUFFIA LEVA CAMBIO NERA

In vera pelle. Misura universale

GEAR SHIFT LEVER BOOT, BLACK
Made of genuine leather. Universal

05006	Grigio	Grey
05007	Rosso	Red
05008	Giallo	Yellow
05009	Blu	Blue

D/Blister 5 / 30



CUFFIA LEVA CAMBIO CON GHIERA

In vera pelle. Completa di ghiera in alluminio, per l'avvitamento alla base dei pomelli. Misura universale

GEAR SHIFT LEVER BOOT WITH RING

Made of genuine leather. Supplied with pre-mounted aluminium fitting ring to connect onto gear knobs. Universal size

05011	Nero	Black
05012	Grigio	Grey
05013	Rosso	Red
05015	Blu	Blue

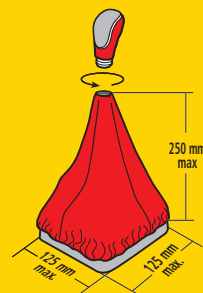
D/Blister 5 / 30

N Idoneo per leva cambio standard e per il montaggio sui collari Lampa (art. 00601, 00602, 00611, 00612)

Suitable for standard gear shift lever and for Lampa collars (art. 00601, 00602, 00611, 00612)

S Idoneo per leva cambio speciale (ghiera innesto retromarcia)

Suitable for special lift-reverse system



140 mm diametro max. diameter max.
500 mm circonferenza max. circumference max.

Cuffie freno mano | Handbrake boots

**CUFFIA IN PELLE
LEVA FRENO A MANO**

Adattabile alla maggior parte delle vetture. Montaggio facile e veloce

**LEATHER CENTRAL
HANDBRAKE BOOT**

Made of genuine leather, suitable for the majority of cars

05051	Nero	Black
05052	Grigio	Grey
05053	Rosso	Red
05055	Blu	Blue

D/Blister 5 / 30



**CUFFIA IN PELLE
LEVA FRENO A MANO NERA**

Adattabile alla maggior parte delle vetture. Montaggio facile e veloce

**LEATHER CENTRAL
HANDBRAKE BOOT, BLACK**

Made of genuine leather, suitable for the majority of cars

05056	Grigio	Grey
05057	Rosso	Red
05058	Giallo	Yellow
05059	Blu	Blue

D/Blister 5 / 30



**IMPUGNATURA
LEVA FRENO A MANO**

In alluminio anodizzato con inserto in pelle. Universale, con 3 ghiere intercambiabili

HAND BRAKE GRIP

Made of aluminium with leather insert. Universal for all levers (grip supplied with a series of 3 interchangeable rings)

05061	Nero	Black
05062	Grigio	Grey
05064	Giallo	Yellow
05065	Blu	Blue

D/Blister 5 / 20



**GTX, IMPUGNATURA
LEVA FRENO A MANO**

In lega di alluminio anodizzato con inserto in pelle. Universale, con 3 ghiere intercambiabili.

GTX, HAND BRAKE GRIP

Made of aluminium with leather insert Universal for all levers (grip supplied with a series of 3 interchangeable rings)

05066	Nero	Black
05069	Blu	Blue

D/Blister 5 / 20



**JUDY, IMPUGNATURA
LEVA FRENO A MANO**

In lega di alluminio anodizzato con inserto in pelle. Universale, con 3 ghiere intercambiabili.

JUDY, HAND BRAKE GRIP

Made of aluminium with leather insert Universal for all levers (grip supplied with a series of 3 interchangeable rings)

05070	Nero	Black
05071	Rosso	Red
05072	Giallo	Yellow
05073	Blu	Blue

D/Blister 5 / 20



**METEOR, IMPUGNATURA LEVA
FRENO A MANO**

In lega di alluminio anodizzato. Inserti ad anello intercambiabili, (cromo, rosso e blu). Universale, con 3 ghiere intercambiabili

METEOR, HAND BRAKE GRIP

Brushed aluminium with titanium colour grip. 3 interchangeable rings (chrome, blue, red). Universal for all levers with 3 adaptors

05060		
--------------	--	--

D/Blister 5 / 20



KITTUNING 1

Pomello in lega di alluminio con inserto in vera pelle. Cuffia cambio in vera pelle. Set pedaliere in alluminio. Coppia cuscini avvolgicintura

KITTUNING 1

Aluminium gear knob with genuine leather insert. Genuine leather gear boot. Set of aluminium pedal pads. 2 safety belt shoulder straps.

06001	Nero	Black
06004	Giallo	Yellow

D/Blister 6



N Idoneo per leva cambio standard fino a Ø 15 mm
Suitable for standard gear shift lever until 15 mm diameter

N
S Idoneo per leva cambio speciale (ghiera innesto retromarcia)
Suitable for special lift-reverse system

KITTUNING 5

Kit Tuning Tutto-Pelle composto da: 2 cuscini avvolgicintura in pelle con ricamo a filo; 1 cuffia cambio in pelle; 1 pomello univ. alluminio+pele; 1 copripomello in pelle

KITTUNING 5

All-leather kit includes: 2 leather safety belt shoulder straps with embroidery; 1 leather gear shift lever boot; 1 universal fit aluminium+leather gear knob; 1 leather steering wheel cover

06033	Giallo	Yellow
--------------	--------	--------

D/Blister 6



KITTUNING 7

Kit Tuning 7 pezzi composto da: Coppia cuscini avvolgicintura; Visor organizer per aletta parasole; Copri impugnatura freno a mano; Due marsupi per cruscotto; Copripomello leva cambio

KITTUNING 7

7 pcs kit: Safety belt shoulder pads; Visor organizer; Hand brake grip cover; Two dashboard multipurpose pockets; Gear shift knob cover

06049	Alluminio	Aluminium
06050	Carbon	Carbon

D/Blister 2 / 6



Kit Coordinati | Interior sets



SPORT-POCKET 1

Marsupio portaoggetti rettangolare

SPORT-POCKET 1

Rectangular multipurpose dashboard pocket

06040

D/Blister 10 / 100



VISOR-ORGANIZER

Per aletta parasole: 7 tasche porta cd, 1 tasca portaoggetti, 2 tasche porta tessere

VISOR-ORGANIZER

7 Cds + 3 multipurpose pockets

06042

D/Blister 10 / 100



SMART-PAD 2 IN 1

Cuscino avvolgicintura con tasca portatelefono

SMART-PAD 2 IN 1

Safety belt shoulder pad with phone holder.

06043

D/Blister 10 / 100



SAFETY BELT SHOULDER PADS

Coppia cuscini avvolgicintura

SAFETY BELT SHOULDER PADS

06044

D/Blister 10 / 50

BRAKE-GRIP

Cuffia copri-impugnatura freno a mano

HAND-BRAKE GRIP

Hand-brake grip-cover

06045

D/Blister 10 / 100



GEAR-TECH

Cuffia copripomello leva cambio. Elasticizzata, imbottitura in neoprene

GEAR-TECH

Gear shift knob cover. Neoprene padded

06046

D/Blister 10 / 100



SPORT-GRIP

CUFFIA COPRIPOMELLO In morbido neoprene. Colori assortiti

SPORT-GRIP

GEAR SHIFT KNOB COVER In soft neoprene. Assorted colours

00130

D/Blister 10 / 100





Cromox

In morbidissima similpelle traforata e traspirante con inserti cromati. Ottima presa in tutte le condizioni

Ultra-soft perforated leatherette. Best grip in all conditions

33057 S Ø 35/37 cm

33037 M Ø 37/39 cm

Busta / Bag 10

Inserti cromati
Chromed inserts



Club

In morbidissima similpelle. Ottima presa in tutte le condizioni

Ultra-soft leatherette. Best grip in all conditions

33055	Nero	Black	S	Ø 35/37 cm
33056	Grigio	Grey		

33038	Nero	Black	M	Ø 37/39 cm
33039	Grigio	Grey		
33040	Blu	Blue		
33041	Rosso	Red		

Busta / Bag 10



Quilt

In morbidissima similpelle trapuntata. Con imbottitura ultra-soffice. Ottima presa in tutte le condizioni. Facile da montare

Ultra-Soft quilted leatherette with ultra-soft foam padding. Best grip in all conditions. Easy to install

33061 S Ø 35/37 cm

33044 M Ø 37/39 cm

Busta / Bag 10



Ultra-Comfort

In morbidissima similpelle traforata. Con cuscinetti in microfibra imbottiti. Ottimo confort e buona presa in tutte le condizioni. Facile da montare

Ultra-soft perforated leatherette with padded microfibre grips. Best grip in all conditions. Easy to install

33062 S Ø 35/37 cm

33045 M Ø 37/39 cm

Busta / Bag 10



Coprivolanti | Steering wheel covers




Air-Grip Black

Lo speciale tessuto a "cellula aperta" con struttura a sandwich permette all'aria di circolare liberamente evitando la sudorazione delle mani.

The open-cell sandwich material allows free circulation of air preventing perspiration of hands

33030	S	Ø 35/37 cm
33031	L	Ø 37/39 cm

Busta / Bag  10




Air-Grip Grey

Lo speciale tessuto a "cellula aperta" con struttura a sandwich permette all'aria di circolare liberamente evitando la sudorazione delle mani.

The open-cell sandwich material allows free circulation of air preventing perspiration of hands

33032	S	Ø 35/37 cm
33033	L	Ø 37/39 cm

Busta / Bag  10




Soft-Touch

Lo speciale tessuto in microfibra e l'imbottitura in spugna assicurano un ottimo confort di guida e straordinaria soffici ta al tatto. Colore nero

The microfibre cloth and the sponge padding ensure a comfortable driving and an extraordinary soft touch. Black colour

33034	S	Ø 35/37 cm
33035	L	Ø 37/39 cm


Busta / Bag  10



Formula One

Coprivolante in poliestere
Polyester steering wheel cover

33090	S	Ø 33/37 cm
33080	L	Ø 37/43 cm

Busta / Bag  10






Cotton Wheel

Coprivolante in morbido cotone tipo salvietta
Terry-cloth steering wheel cover

33081 L Ø 37/43 cm


Busta / Bag  10



Sensor System

Coprivolante in PVC stampato radica con inserti massaggianti
Walnutgrain-look steering wheel cover with massage inserts

33086 L Ø 37/39 cm


Busta / Bag  10



Ergo-Grip

Coprivolante in similpelle, ergonomico
Ergonomic PVC steering wheel cover

33087 L Ø 37/39 cm

Busta / Bag  10




Zic

Coprivolante in similpelle, fornito in colori assortiti
Steering wheel cover supplied in assorted colours

33098 S Ø 35/37 cm

33088 L Ø 37/39 cm

Busta / Bag  10





Kuro

In morbidissima similpelle traforata e traspirante. Ottima presa in tutte le condizioni. Ultra-soft perforated leatherette. Best grip in all conditions

33058 S Ø 35/37 cm
33036 L Ø 37/39 cm

Busta / Bag 10

Similpelle traforata
Impugnatura ergonomica
Perforated leatherette
Ergonomic grip



Katana

In morbidissima similpelle. Impugnatura ergonomica, inserti cromati. Facile da montare. Ultra-soft leatherette. Ergonomic grip, chromed inserts

33060 S Ø 35/37 cm
33042 M Ø 37/39 cm

Busta / Bag 10

Inserti cromati
Impugnatura ergonomica
Chromed inserts
Ergonomic grip



Dedon

In morbidissima similpelle traforata e traspirante. Inserti ergonomici. Ottima presa in tutte le condizioni. Facile da montare. Ultra-soft perforated leatherette. Ergonomic grip, easy to install

33059 S Ø 35/37 cm
33043 M Ø 37/39 cm

Busta / Bag 10

Similpelle traforata
Impugnatura ergonomica
Perforated leatherette
Ergonomic grip



Sport Soft Drive

Coprivolante sportivo in microfibra con imbottitura in spugna. Installazione tramite cucitura a filo. Si adatta perfettamente all'impugnatura anatomica del volante.

Kit fai da te completo di filo in nylon ed ago

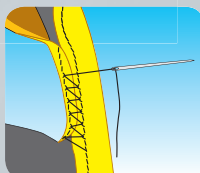
Microfibre comfort-sport concept. Sponge-padded steering wheel cover. String-type fitting, looks like original racing wheel. D.I.Y. fitting kit included (Nylon thread and needle)

33051		Nero	Black	U Ø 33/43 cm
33052		Grigio	Grey	
33053		Rosso	Red	
33054		Blu	Blue	

D/Blister 10 / 40



MICROFIBRA



Coprivolanti | Steering wheel covers



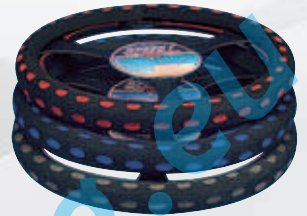
Speed-1

Coprivolante sportivo in morbida gommaspugna ad alto grappaggio. Misura unica

Steering wheel cover made from soft, high-grip rubber foam. Universal size

33103	Rosso	Red		
33105	Blu	Blue	U	Ø 33/43 cm
33107	Grigio	Grey		

Busta / Bag 12



Speed-2

Coprivolante sportivo in morbida gommaspugna ad alto grappaggio. Misura unica

Steering wheel cover made from soft, high-grip rubber foam. Universal size

33104	Rosso	Red		
33106	Blu	Blue	U	Ø 33/43 cm
33108	Grigio	Grey		

Busta / Bag 12



Leather

Coprivolante in vera pelle, morbido ed elasticizzato, si monta in pochi secondi

Genuine leather steering wheel cover, soft and smooth touch. It fits in few seconds

33003	Nero	Black	S	Ø 35/37 cm
33004	Grigio	Grey		
33005	Nero	Black	L	Ø 37/39 cm
33006	Grigio	Grey		

Cartoncino / Card 5 / 20



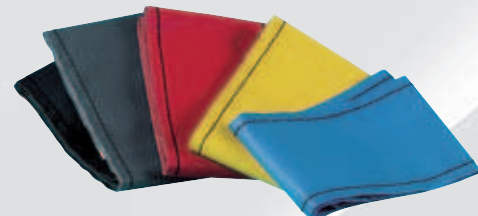
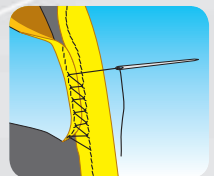
Leather-Kit

Coprivolante in vera pelle. Kit di montaggio fai da te completo di filo speciale in nylon ed ago

Genuine leather steering wheel cover. D.I.Y. kit

33011	Nero	Black		
33012	Grigio	Grey		
33013	Rosso	Red	L	Ø 37/39 cm
33014	Giallo	Yellow		
33015	Blu	Blue		

D/Blister 5 / 30





4,5 mm
spessore



JUMBO-FANT, COPRIVOLANTE
Universale con laccio,
spessore 4,5 mm, larghezza 87 mm
**JUMBO-FANT,
STEERING WHEEL COVER**
4,5 mm thickness, 87 mm width,
with lace

33020

D/Blister 10 / 100



2,5 mm
spessore



ELEFANT, COPRIVOLANTE
Universale con laccio,
spessore 2,5 mm, larghezza 87 mm
ELEFANT, STEERING WHEEL COVER
2,5 mm thickness, 87 mm width,
with lace

33050

D/Blister 10 / 100



POMELLO VOLANTE
Universale con staffa in metallo
anodizzato
STEERING WHEEL KNOB
With black metal bracket

00135

D/Blister 10 / 80



PALLINO, POMELLO VOLANTE
Pomello volante universale
PALLINO
Universal steering wheel knob

00136

D/Blister 10 / 80



POWER-BALL, POMELLO VOLANTE
Pomello per volante in vera pelle
POWER-BALL
Leather steering wheel knob

00137

Blister 10 / 100



PRO WHEEL, KIT INSERTI PER VOLANTE
Decorazioni adesive, facili da applicare.
Universale per tutti i volanti. Ø 36/39 cm.

PRO WHEEL, STEERING-WHEEL COVER INSERTS
Refined and premium tuning ornaments
adhesive mount. Universal fit for steering wheels
Ø 36/39 cm

33070	Argento	Silver
33071	Cromo	Chrome
33072	Cromo/Nero	Chrome/Black
33073	Carbon	Carbon

Scatola / Box 5 / 50



Pro-Wheel



Pilot 1

PILOT-1, GUANTI GUIDA MEZZE DITA
In morbida pelle di agnello prima scelta.
Dorso in filo di cotone lavorato a mano
per un'ottima traspirazione

PILOT-1, HALF FINGER DRIVING GLOVES
Top Quality ultra-soft lamb skin leather
with cotton-net backing. Handmade

71411	M		
71412	L	Nero	Black
71413	XL		
71415	M		
71416	L	Marrone	Brown
71417	XL		

Scatola / Box 10 / 100



Pilot 2

PILOT-2, GUANTI GUIDA MEZZE DITA
In morbida pelle di agnello. Cuciti a mano
PILOT-2, HALF FINGER DRIVING GLOVES
Top quality ultra-soft lamb skin leather
handmade

71420	M		
71421	L	Nero	Black
71422	XL		

Scatola / Box 10 / 100



Pilot 3

PILOT-3, GUANTI GUIDA
In morbida pelle di agnello.
Cuciti a mano

PILOT-3, DRIVING GLOVES
Top quality ultra-soft
Lamb Skin leather handmade

71424	M		
71425	L	Nero	Black
71426	XL		

Scatola / Box 10 / 100





Curve Curved

02520	6 cm
02521	10 cm

D/Blister 5 / 20



Dritte Straight

02522	10 cm (chrome)
--------------	----------------

D/Blister 5 / 20



Racing Levers



RACING PINS, UNIVERSALI
Coppia leve chiusura portiere, lega di alluminio anodizzato, foro max Ø 6 mm

RACING PINS, UNIVERSAL
Door locking pins, anodized aluminium. Universal for levers up to 6 mm Ø

02510	Alluminio	Aluminium
02511	Blu	Blue
02512	Rosso	Red

D/Blister 10 / 100



RACING PINS
Coppia leve chiusura portiere, lega di alluminio anodizzato

RACING PINS
Door locking pins, anodized aluminium.

02513	Peugeot 106,205,309 - Citroen Saxo
02518	Bmw

D/Blister 10 / 100



VERA PELLE 1 MQ
Prima scelta, pieno fiore, taglio quadrato, spessore uniforme. Per cruscotti, pannelli portiere, cuffie cambio, cuffie freno a mano e qualsiasi altro utilizzo all'interno dell'abitacolo

GENUINE LEATHER CUT, 1 SQM
First quality, square shape, uniform thickness. For dashboard, door panels, shift boots, and any other car interior use.

05020	Nero	Black
05021	Grigio	Grey
05022	Rosso	Red
05023	Giallo	Yellow
05024	Blu	Blue

Scatola / Box 2 / 20

